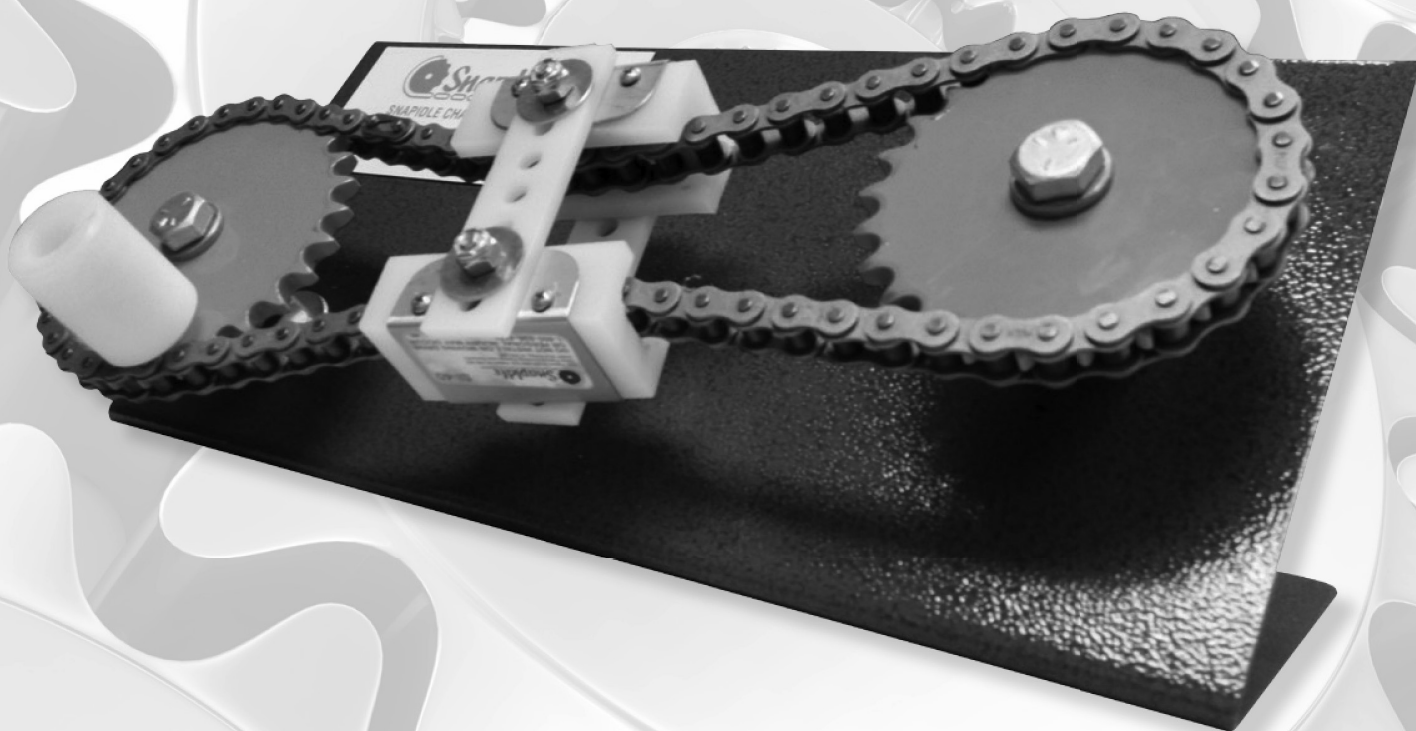


Snapidle ™



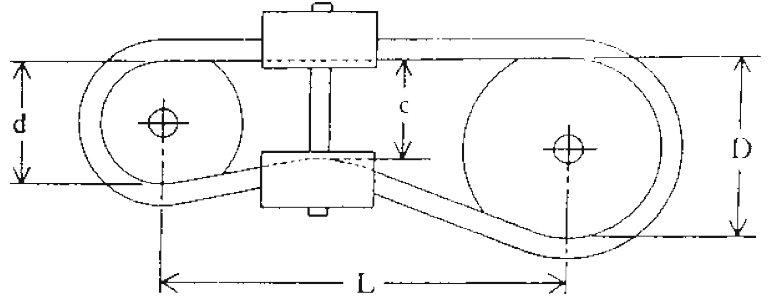
P.O. Box 38 | Moxee, Washington 98936
(509) 575-6322 | Sales (800) 836-4721 | Fax (509) 575-0890
sales@snapidle.com | www.snapidle.com

— Selection Criteria —

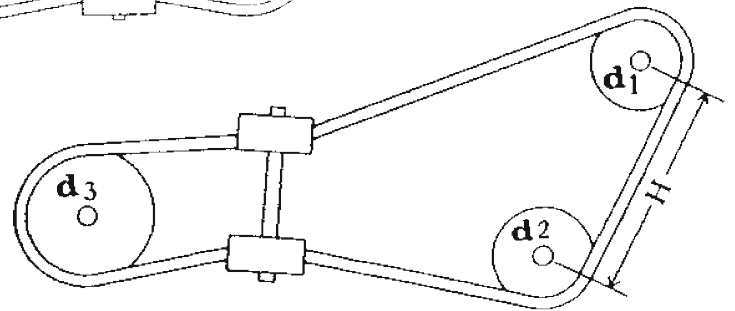
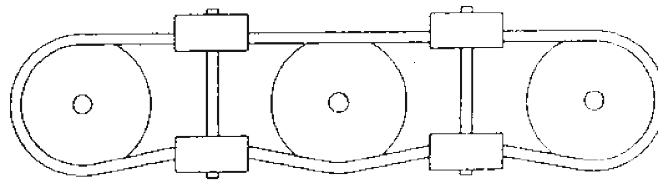
Standard Criteria

- $R_1 = D/d =$ Sprocket Ratio
- $R_2 = D/L =$ Drive Aspect Ratio
- $R_3 = c/d =$ Constant Ratio

- R_1 must be less than 4
- R_2 should be less than or equal to 0.5
- R_3 should be less than or equal to 0.85

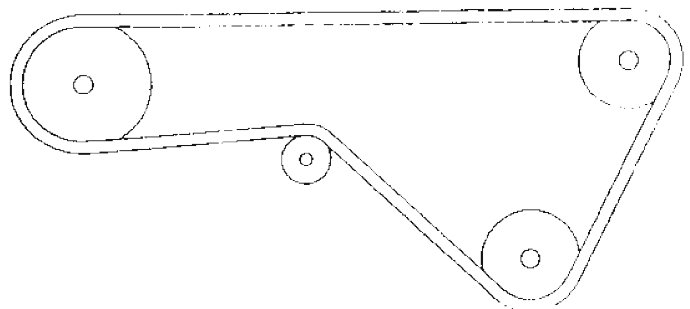
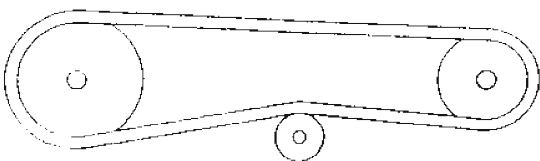


Multiple Sprocket Applications Standard Criteria



If $\frac{H + d_1 + d_2}{d_3}$ is not less than 4 use Standard Criteria.

Standard SI not applicable.
Use SI-SG1 or SI-SG2

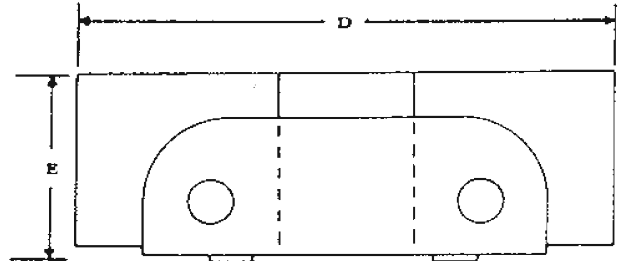
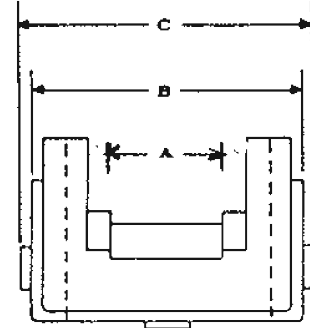


– Engineering Data –

Standard, High-Temp, Extra-Heavy and Self-Lubricating Snapldles

Narrow and Space Saver Snapldle Dimensions

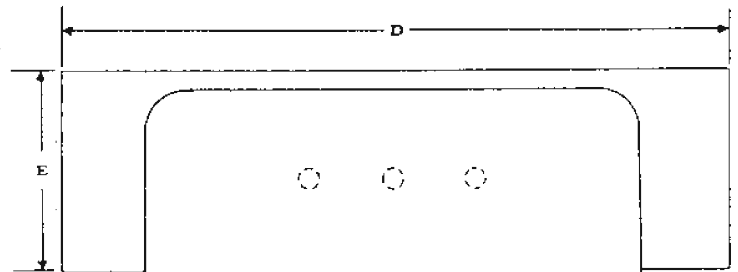
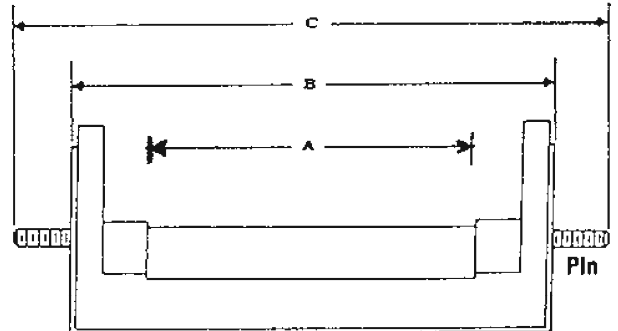
SPACE NARROW PROFILE		SPACE SAVER PROFILE		INCHES		
SI#	SI#	A	B	C	D	E
25-N		.312	1.09	1.09	2.50	1.126
35-N		.470	1.09	1.09	2.50	1.126
40-N		.625	1.50	1.68	3.00	1.036
50-N		.750	1.69	1.87	3.50	1.036
	60-N	1.06	1.94	2.50	4.00	1.286
	80-N	1.31	2.31	2.75	4.50	1.286
	100-N	1.56	2.65	3.00	5.00	1.548
	120-N	2.07	3.28	3.75	5.50	1.638
	140-N	2.07	3.28	3.75	5.50	1.638
	160-N	2.44	3.72	4.00	6.50	1.638
	180-N	2.63	4.05	4.50	7.00	1.649



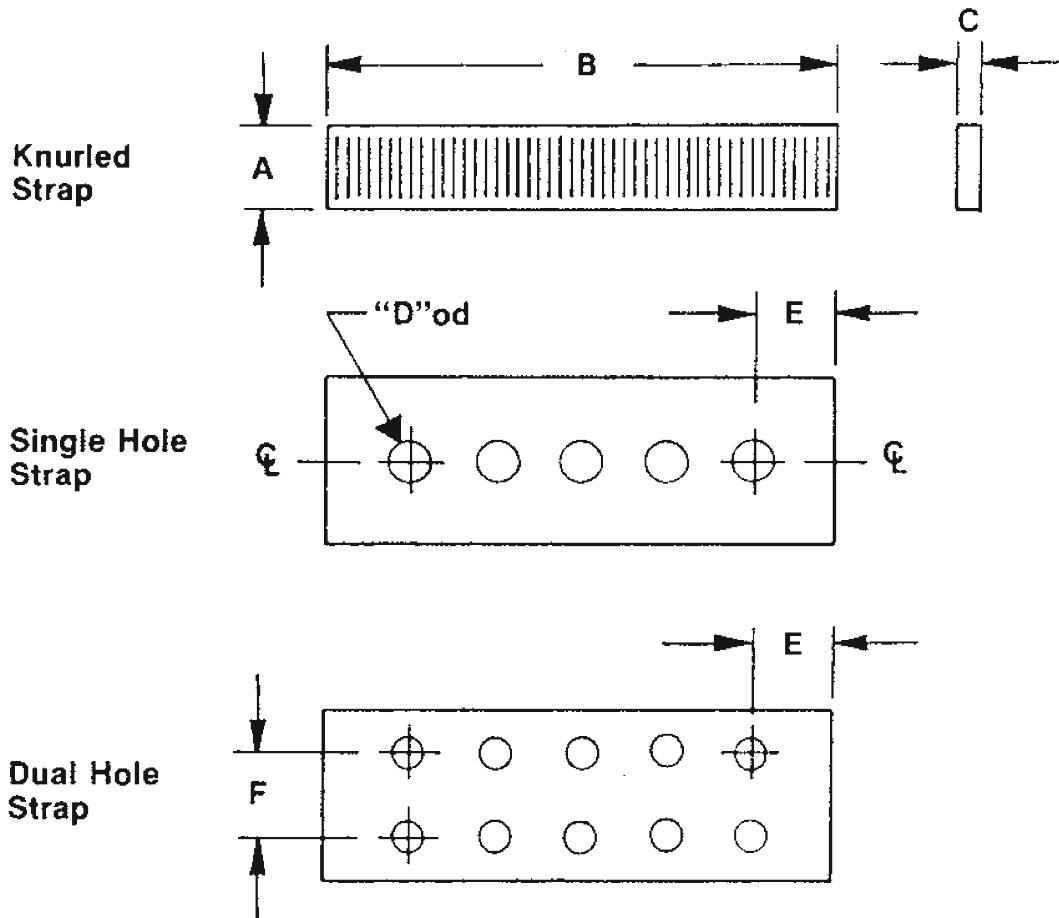
Standard Snapldle Dimensions

INCHES

SI#	A	B	C	D	E
40	0.62	1.50	2.68	3.00	1.036
50	0.75	1.69	2.87	3.50	1.036
60	1.06	1.94	3.12	4.00	1.036
80	1.31	2.32	3.75	4.50	1.036
100	1.56	2.65	4.06	5.00	1.388
120	2.07	3.40	4.81	5.50	1.638
140	2.07	3.40	4.81	5.50	1.638
160	2.44	3.84	5.25	6.50	1.638
180	2.63	4.18	5.56	7.00	1.649
200	2.91	4.65	6.00	7.50	2.70
240	4.19	6.02	7.37	8.00	2.70



— Engineering Data — SnapIdle Side Straps



Dimension Data

SI#	A	B	C	D	E	F
25-35	.750	12"	.125	N.A.	N.A.	N.A.
40N-50N	.750	12"	.125	N.A.	N.A.	N.A.
40-60	1.00	12"	.187	.290	.50	N.A.
80-120	1.50	16"	.250	.290	.50	N.A.
140-180	3"	16"	.250	.290	.50	1.50
200	3"	24"	.250	.350	.75	1.50
240	3"	36"	.250	.350	.75	1.50

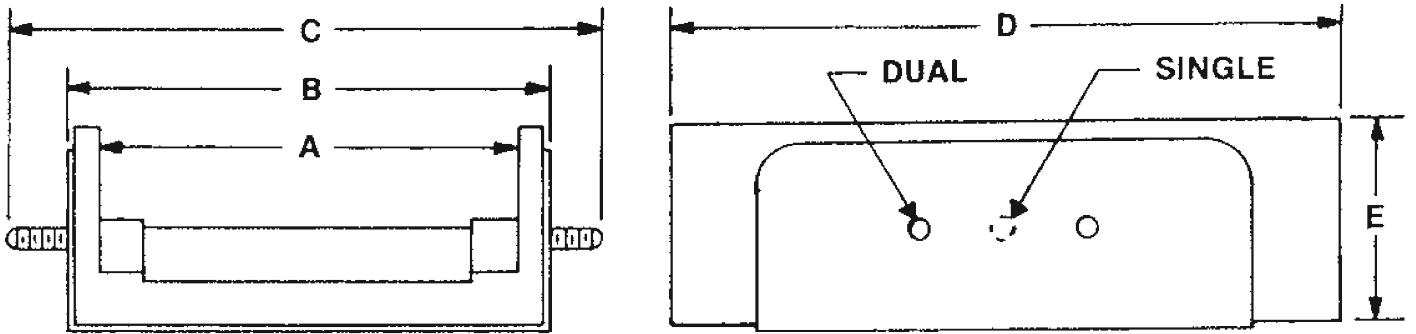
Pin Data

SI #	Length ($\pm .015$ in.)	OD ($\pm .003$ in.)	Threads Per Inch Class 214 (MIL-S-7742)	Maximum Installation Torque Inch lbs.
40-60	0.625	0.250	20	80
80-180	0.750	0.312	18	185
200-240	0.750			

MATERIAL: Stainless Steel

FINISH: Stainless Steel

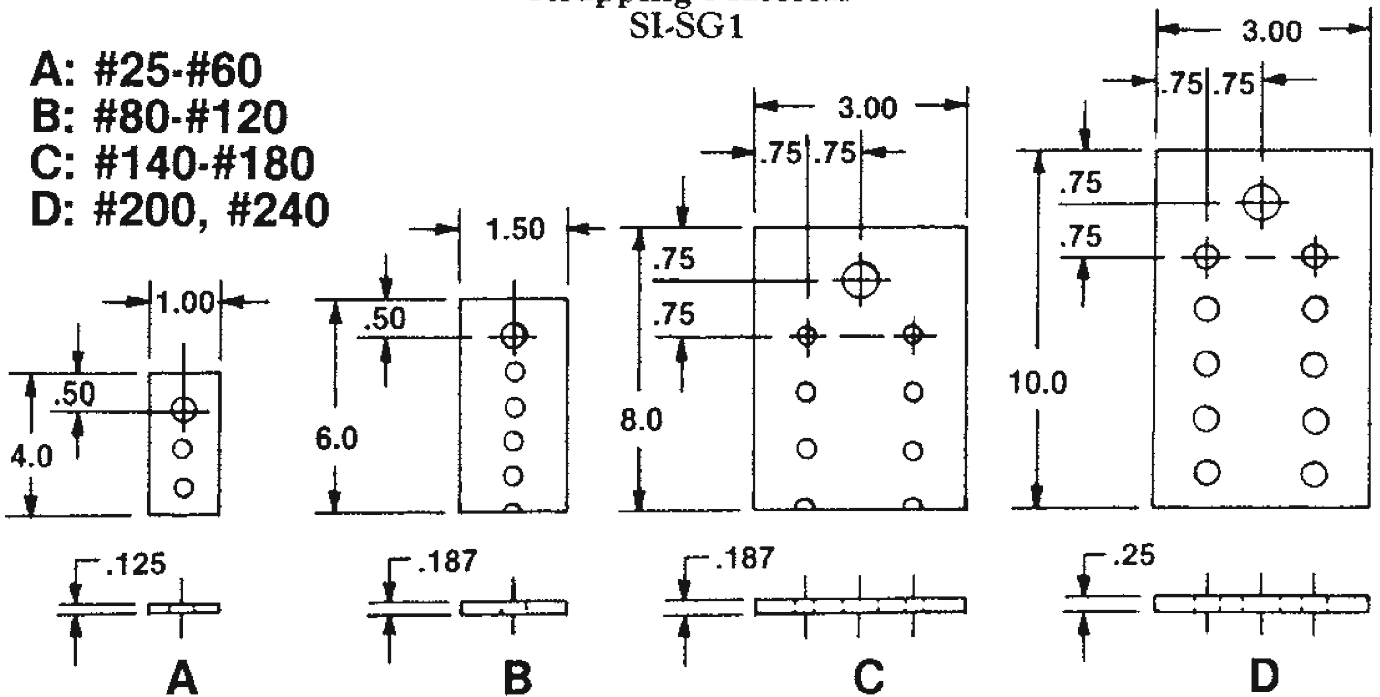
— Engineering Data —
SI-SG1



		Dimensions Inches					Dimensions Millimeters				
	SI #	A	B	C	D	E	A	B	C	D	E
Single Pin	40	0.93	1.56	2.81	3.00	1.00	23.8	39.6	71.4	76.2	25.4
	50	1.12	1.75	3.00	3.50	1.00	28.5	44.4	76.2	88.9	25.4
	60	1.37	2.00	3.25	4.00	1.00	34.9	50.8	82.6	101.6	25.4
	80	1.75	2.37	3.37	4.50	1.00	44.4	60.3	85.7	114.3	25.4
	100	2.06	2.68	4.18	5.00	1.25	52.3	68.2	106.3	127.0	28.5
	120	2.68	3.43	4.93	5.50	1.50	68.2	87.3	125.4	139.7	38.1
Dual Pin	140	2.68	3.43	4.93	5.50	1.50	68.2	87.3	125.4	139.7	38.1
	160	3.12	3.87	5.37	6.50	1.50	79.3	98.4	136.5	165.1	38.1
	180	3.43	4.18	5.68	7.00	1.50	87.3	106.3	144.4	177.8	38.1
	200	4.05	4.62	6.12	7.50	2.50	105.4	117.4	155.5	190.5	63.5
	240	5.25	6.00	7.50	8.00	2.50	133.3	152.4	190.5	203.2	63.5

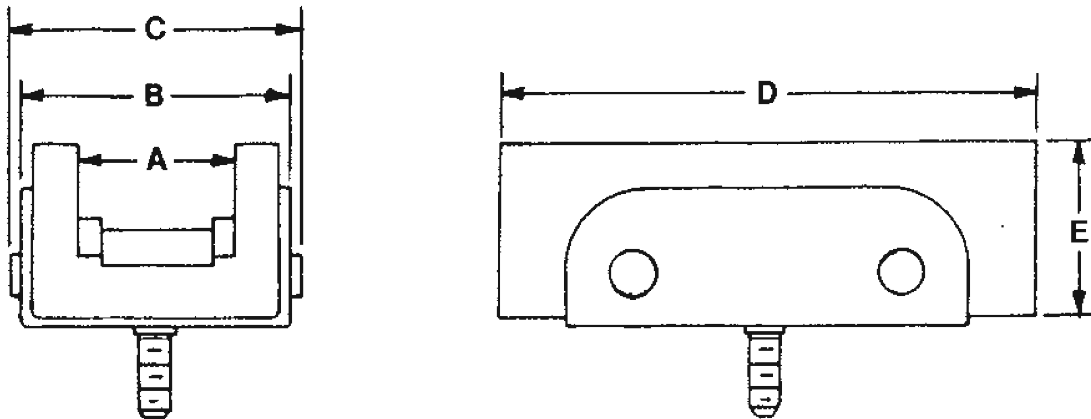
**Strapping Material
SI-SG1**

- A: #25-#60**
- B: #80-#120**
- C: #140-#180**
- D: #200, #240**



NOTE: SI-SG1 will fit any popular arm type tensioning system. This unit would replace the existing sprockets

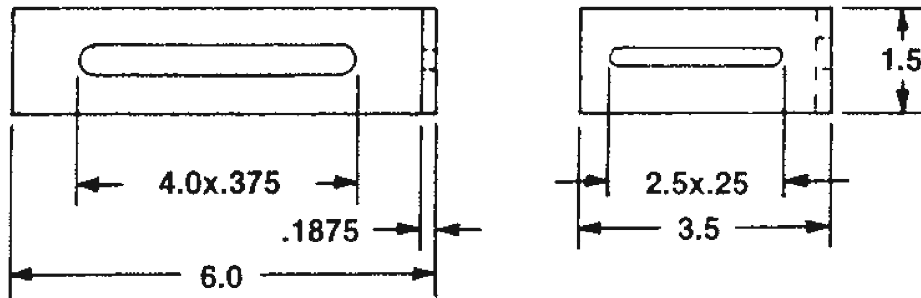
— Engineering Data —
SI-SG2



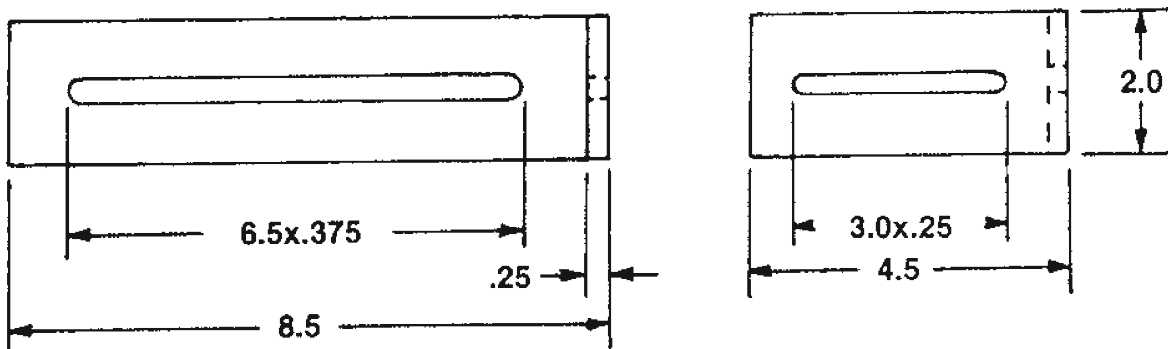
SI #	Dimensions Inches					Dimensions Milimeters				
	A	B	C	D	E	A	B	C	D	E
40	0.93	1.56	2.81	3.00	1.00	23.8	39.6	71.4	76.2	25.4
50	1.12	1.75	3.00	3.50	1.00	28.5	44.4	76.2	88.9	25.4
60	1.37	2.00	3.25	4.00	1.00	34.9	50.8	82.6	101.6	25.4
80	1.75	2.37	3.37	4.50	1.00	44.4	10.3	85.7	114.3	25.4
100	2.06	2.68	4.18	5.00	1.25	52.3	68.2	106.3	127.0	28.5
120	2.68	3.43	4.93	5.50	1.50	68.2	87.3	125.4	139.7	38.1

Single Pin

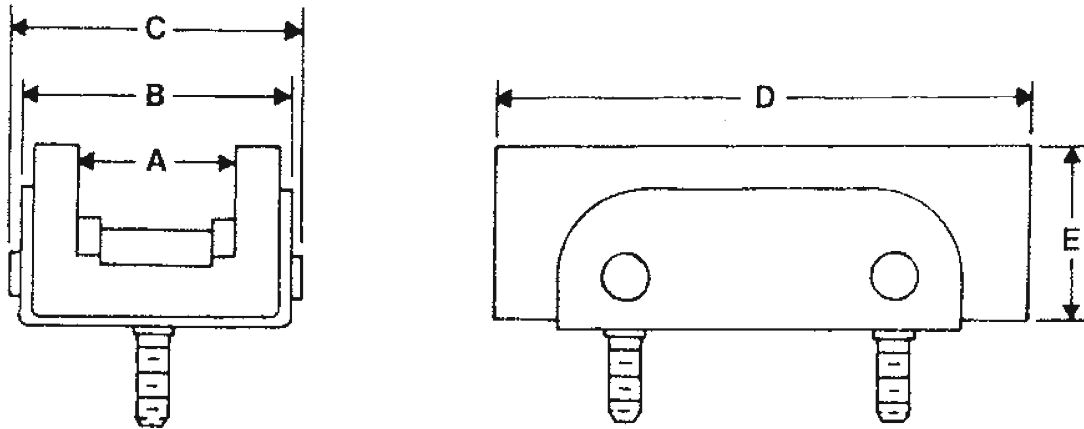
**SI-SG2 BRACKET
SI-25 THRU SI-60**



SI-80 THRU SI-120



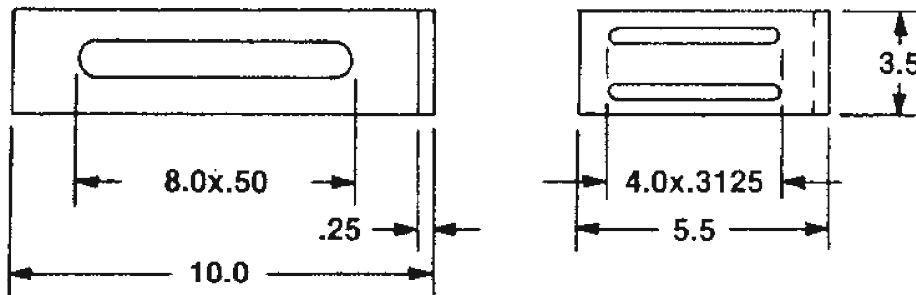
— Engineering Data —
SI-SG2



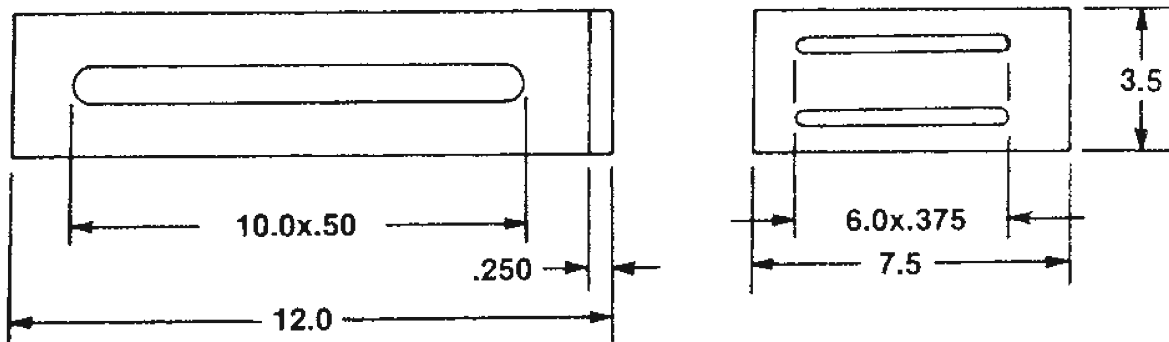
Dual Pin

SI #	Dimensions Inches					Dimensions Millimeters				
	A	B	C	D	E	A	B	C	D	E
140	2.68	3.43	4.93	5.50	1.50	68.2	87.3	125.4	139.7	38.1
160	3.12	3.87	5.37	6.50	1.50	79.3	98.4	136.5	165.1	38.1
180	3.43	4.18	5.68	7.00	1.50	87.3	106.3	144.4	177.8	38.1
200	4.05	4.62	6.12	7.50	2.50	105.4	117.4	155.5	190.5	63.5
240	5.25	6.00	7.50	8.00	2.50	133.3	152.4	190.5	203.2	63.5
...										

**SI-SG2 BRACKET
SI-140 THRU SI-180**



SI-200 THRU SI-240





P.O. Box 38 • Moxee, WA 98936
 (509) 575-6322
 Fax # (509) 575-0890

ANSI STANDARD ROLLER CHAIN

Cross Reference Chart

S-I #	ANSI #
#25	(25)
#35	(35)
#40	(25-2, 41, 40, 52)
#50	(35-2, 50)
#60	(40-2, 35-3, 60)
#80	(50-2, 35-4, 80)
#100	(60-2, 40-3, 76, 100)
#120	(80-2, 50-3, 40-4, 120)
#140	(140)
#160	(50-4, 40-5, 160)
#180	(60-3, 180)
#200	(100-2, 60-4, 50-5, 40-6, 200)
#240	(120-2, 140-2, 80-3, 100-3, 60-5, 50-6, 240)
*When ordering #300, #400, #500 and #600 series, please refer to footnotes provided below.	
#300	(160-2, 180-2, 200-2, 240-2, 120-3, 140-3, 160-3, 80-4, 100-4, 120-4, 140-4) (80-5, 100-5, 60-6, 80-6, 60-8)
#400	(200-3, 240-3, 160-4, 200-4, 120-5, 140-5, 160-5, 100-6, 120-6) (140-6, 80-8, 100-8, 180-3, 180-4)
#500	(240-4, 160-6, 120-8, 140-8, 180-5)
#600	(180-6, 200-6, 240-5, 160-8)

Footnotes

- Note 1. These units must be ordered as follows, the Snapldle# and the ANSI chain that it is to fit.
(i.e. #300 Snapldle to fit 240-2 R.C.)
- Note 2. Allow four weeks for delivery.
- Note 3. See cross reference chart for non-referenced chains.
- Note 4. Side strap lengths all 48"



P.O. Box 38 • Moxee, WA 98936
(509) 575-6322
Fax # (509) 575-0890

ANSI H-SERIES CHAIN

Cross Reference Chart

S-I #	ANSI #
#60	(60-H)
#80	(80-H)
#100	(100-H)
#120	(120-H, 60-2H)
#140	(140-H)
#160	(160-H, 80-2H)
#180	(180-H, 100-2H)
#200	(200-H)
#240	(240-H, 120-2H, 140-2H, 80-3H, 100-3H)

*When ordering #300, #400, #500 and #600 series, please refer to footnotes provided below.

#300	(160-2H, 200-2H, 120-3H, 140-3H, 160-3H, 80-4H, 100-4H, 120-4H) (60-5H, 80-5H, 100-5H, 60-6H, 80-6H)
#400	(200-3H, 140-4H, 160-4H, 120-5H, 140-5H, 100-6H, 120-6H)
#500	(200-3H, 200-4H, 160-5H, 140-6H, 160-6H)
#600	(See note #4)

Footnotes

- Note 1. These units must be ordered as follows, the Snapdile# and the ANSI chain that it is to fit.
(i.e. #300 Snapdile to fit 240-2 R.C.)
- Note 2. Allow four weeks for delivery.
- Note 3. See cross reference chart for non-referenced chains.
- Note 4. Side strap lengths all 48"



P.O. Box 38 • Moxee, WA 98936
(509) 575-6322
Fax # (509) 575-0890

ANSI MILL, CONVEY & ENGINEERING CLASS CHAIN

Cross Reference Chart

S-I #	ANSI #
#40	(C-2040, C-2050)
#60	(C20-60)
#80	(C-2080, 3100, CA-550)
#100	(C-2100, 81-X, CA-620)
#120	(C-2120, 3120, 3140, H-62)
#140	(See Non-Referenced Chains)
#160	(C-2160, 3160, H-60, H-74, H-75)
#180	(3180, H-78)
#200	(H-82, 200-H, 2010, 720)
#240	(3125, 3924, H-124, 2814, 2512, 720S, 730)

*When ordering #300, #400, #500 and #600 series, please refer to footnotes provided below.

#300	(3618, 4020, 3315, 4824, H-155, H-320, 710)
#400	(See note #4)
#500	(See note #4)
#600	(See note #4)

Footnotes

- Note 1. These units must be ordered as follows, the Snapidle# and the ANSI chain that it is to fit.
(i.e. #300 Snapidle to fit H-155)
- Note 2. Allow four weeks for delivery.
- Note 3. See cross reference chart for non-referenced chains.
- Note 4. Side strap lengths all 48"



P.O. Box 38 • Moxee, WA 98936
(509) 575-6322
Fax # (509) 575-0890

BRITISH STANDARD ROLLER CHAIN

Cross Reference Chart

S-I #	ISO-B	BS/DIN #
#35	(06B)	
#40	(08B)	
#50	(10B, 06B-2)	
#60	(12B, 08B-2)	
#80	(16B, 20B, 10B-2)	
#100	(12B-2, 08B-3)	
#120	(24B, 10B-3)	
#160	(28B, 32B, 16B-2, 12B-3)	
#180	(40B, 20B-2)	
#240	(24B-2, 28B-2, 32B-2, 16B-3, 20B-3)	

*When ordering #300, #400, #500 and #600 series, please refer to footnotes provided below.

#300	(40B-2, 24B-3, 28B-3, 32B-3)
#400	(See note #4)
#500	(See note #4)
#600	(See note #4)

Footnotes

- Note 1. These units must be ordered as follows, the Snapldle# and the ISO chain that it is to fit.
(i.e. #300 Snapldle to fit 32B-3RC)
- Note 2. Allow 4-6 weeks for delivery.
- Note 3. See cross reference chart for non-referenced chains.
- Note 4. Side strap lengths all 32 centimeters.