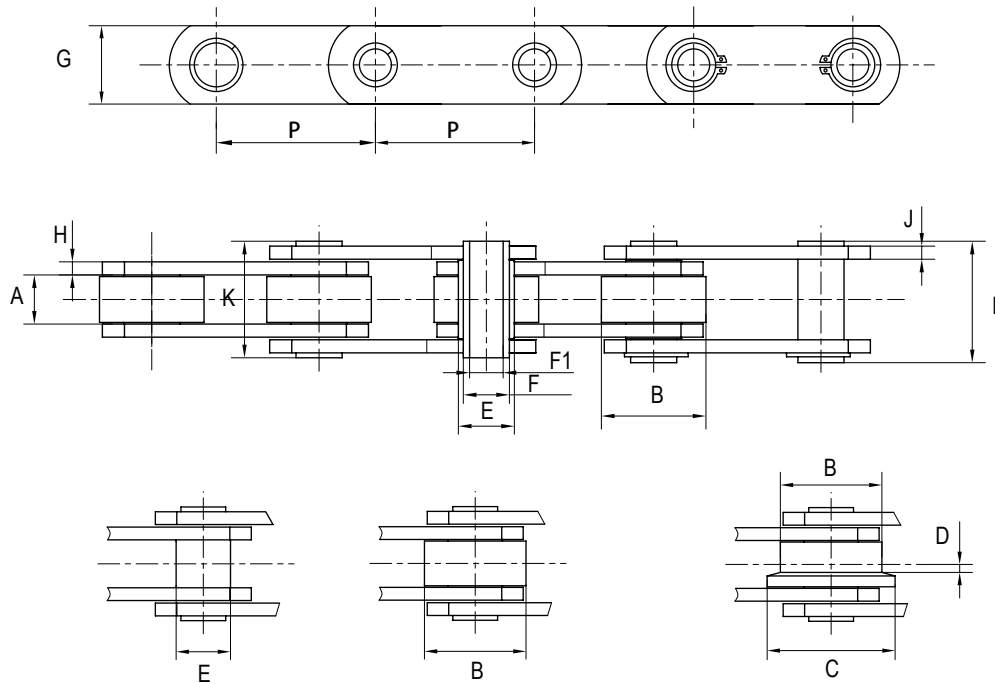


CONVEYOR CHAIN (Hollow Pin)

British Standard.



Load	Pitch	Pitch	Width between inner plates	Roller Dimension			Bush Dia	Pin Dia		Plate depth	Plate Thickness		Pin Length		Breaking Load			
	P	P		A	B	C	D	E	F	F1	G	H	J	K	L	Min	Avg	
Lbf	Inches	mm	mm	mm	mm	mm	mm	mm	mm	mm	mm	mm	mm	mm	Lbs	Lbs	Lbs	kg/m
4,500	1.5	38.1	12.7	25.4	-	-	11	9	6.5	18	2.5	2.5	26.0	27.5	20,000	21,000	-	2.2
	2.0	50.8	"	"	"	"	"	"		"	"	"	"	"	"	"	"	1.7
	2.5	63.5	"	"	"	"	"	"		"	"	"	"	"	"	"	"	1.6
6,000	3.0	76.2	"	"	"	"	"	"		"	"	"	"	"	"	"	"	1.4
	2.0	50.8	15.0	31.75	40	2.5	17	14	10.2	25	4.0	4.0	36.4	37.7	27,000	40,000	50,000	3.6
	2.5	63.5	"	"	"	"	"	"		"	"	"	"	"	"	"	"	3.2
	3.0	76.2	"	"	"	"	"	"		"	"	"	"	"	"	"	"	3.0
	3.5	88.9	"	"	"	"	"	"		"	"	"	"	"	"	"	"	2.8
	4.0	101.6	"	"	"	"	"	"		"	"	"	"	"	"	"	"	2.6
	5.0	127.0	"	"	"	"	"	"		"	"	"	"	"	"	"	"	2.4
12,000	6.0	152.4	"	"	"	"	"	"		"	"	"	"	"	"	"	"	2.3
	3.0	76.2	19.0	47.5	60	3.5	23	19	13.2	40	5.0	4.0	45.0	46.5	54,000	60,000	120,000	7.0
	3.5	88.9	"	"	"	"	"	"		"	"	"	"	"	"	"	"	6.4
	4.0	101.6	"	"	"	"	"	"		"	"	"	"	"	"	"	"	6.0
	5.0	127.0	"	"	"	"	"	"		"	"	"	"	"	"	"	"	5.3
	6.0	152.4	"	"	"	"	"	"		"	"	"	"	"	"	"	"	4.9
	7.0	177.8	"	"	"	"	"	"		"	"	"	"	"	"	"	"	4.6
24,000	8.0	203.2	"	"	"	"	"	"		"	"	"	"	"	"	"	"	4.4
	4.0	101.6	26.0	66.7	82	4.0	33	26.9	20.2	50	7.0	5.0	58.0	60.5	107,000	150,000	190,000	12.8
	5.0	127.0	"	"	"	"	"	"		"	"	"	"	"	"	"	"	11.3
	6.0	152.4	"	"	"	"	"	"		"	"	"	"	"	"	"	"	11.0
	7.0	177.8	"	"	"	"	"	"		"	"	"	"	"	"	"	"	9.5
	8.0	203.2	"	"	"	"	"	"		"	"	"	"	"	"	"	"	9.0
	9.0	228.6	"	"	"	"	"	"		"	"	"	"	"	"	"	"	8.6
36,000	10.0	254.0	"	"	"	"	"	"		"	"	"	"	"	"	"	"	8.2
	6.0	152.4	38.0	88.9	114	8.5	38	32	22.5	60	10.0	8.0	83.0	85.0	160,000	300,000	380,000	22.3
	7.0	177.8	"	"	"	"	"	"		"	"	"	"	"	"	"	"	20.2
	8.0	203.2	"	"	"	"	"	"		"	"	"	"	"	"	"	"	18.8
	10.0	254.0	"	"	"	"	"	"		"	"	"	"	"	"	"	"	16.4
	12.0	304.8	"	"	"	"	"	"		"	"	"	"	"	"	"	"	15.2

Maximum breaking load chain has hardened sideplates.

Sprockets Australia has made every attempt to ensure data above is accurate however accepts no liability for inaccuracies or damage caused.